

# Basic Needs

## Community Resources in Brown County



*We are here to listen to your story and help you find answers and solutions.*

**ADRC of Brown County**  
300 S. Adams St. Green Bay, WI 54301  
(920) 448-4300  
[www.adrcofbrowncounty.org](http://www.adrcofbrowncounty.org)  
ADRC is a nonprofit, 501(c)3 organization

Find us online:



# Getting Started

Where you look for help will depend on the needs of you and your family. When thinking about where to turn for help, don't forget your friends, your family, or your church or faith community. If you are looking for something specific, like transportation, you can look it up in the list of community resources in this handbook. If you aren't sure where to begin, consider contacting one of the programs listed in the "Programs to Help You Get Started" section.

Please Note: This is not an all-inclusive list of resources. If you cannot find what you're looking for, please call ADRC to discuss your situation and get up-to-date information. ADRC of Brown County is a no-cost resource center located in downtown Green Bay. Our specialists are here to help guide you through the resources available and answer your questions.

## Table of Contents

<b>3-4</b>	Programs to Help you Get Started
<b>5</b>	Childcare
<b>6-7</b>	One on One Mentoring Clothing and Household Items
<b>8</b>	Personal Services
<b>9</b>	Employment
<b>10-11</b>	Financial Assistance- General
<b>12</b>	Financial Assistance- Home Energy
<b>13</b>	Financial Assistance- Telephone
<b>14</b>	Legal Assistance & Advocacy
<b>15-16</b>	General Services- Drop by Centers Food Resources
<b>17</b>	Hot Meals
<b>18-21</b>	Medical/Health Services, Prescription Assistance, Dental Services

<b>22-23</b>	Mental Health- Inpatient Psychiatric Care
<b>23-25</b>	Shelter- emergency & Temporary
<b>26-27</b>	St. John's Ministries
<b>28</b>	Rent Assistance & Subsidized Housing
<b>29-31</b>	Transportation

### For more information:

Visit our website:

[www.adrcofbrowncounty.org](http://www.adrcofbrowncounty.org)

211 Community Services

database: [www.get211.org](http://www.get211.org)

Follow us on Facebook:

[ADRCbrowncountywi](https://www.facebook.com/ADRCbrowncountywi)

# Programs to Help Get You Started

## Are you having trouble making ends meet?

There are many reasons why you may need some extra help. Maybe you're waiting to see if you qualify for disability benefits. Perhaps you have disability benefits, but the income isn't enough to meet your needs. Maybe you're working but barely earning enough to get by. Fortunately, there are many community resources available in Brown County to help you bridge the gap between your income and meeting your family's basic needs.

## Are you overwhelmed and unable to cope?

If you feel overwhelmed and unable to cope with your life situation, you need to get help right away. The Crisis Center has counselors available 24 hours a day, 7 days a week to help you. Their services are free and confidential. Crisis Center counselors will listen to you, provide an assessment of your situation, and help you develop a plan to meet your needs. They can help you with a wide variety of issues including: stress management, major life changes, suicidal thoughts, depression, relationship issues, anxiety, and alcohol and drug abuse.

## If you feel unable to cope and need immediate assistance contact the Crisis Center at:

**Phone: (920) 436-8888**

**TTY: (920) 436-8887**

**Location: 3150 Gershwin Dr. Green Bay, WI 54311**

## 2-1-1

2-1-1 is a joint venture between Brown County United Way, ADRC, Family Services Crisis Center, Help of Door County, and Kewaunee County to serve the Northeast Wisconsin area with 24-hour, 365-days a year information and referral services.

Calls are confidential, you can remain anonymous, and the service is free.

Dial or text 2-1-1 to speak with a call specialist who can help you assess your needs and refer you to the appropriate community resources.

Online access go to [www.get211.org](http://www.get211.org).

# Programs to Help Get You Started Continued

## Aging and Disability Resource Center

ADRCs are a Wisconsin idea designed to partner with older adults, persons with disabilities, and their caregivers, empowering them to live their best possible life. We're here to partner with you through all of life's changes and challenges. ADRC of Brown County offers a broad range of services from activities, events, and workshops, to assistance with the challenges of aging and disability.

Are you in a whole new world of doctor's visits, medical conditions, financial decisions, home maintenance or repair? The list goes on and we have specialist to listen to your story. ADRC is your source for unbiased, comprehensive information.

## ADRC Specialist

If you or a loved one is aging or disabled, ADRC Information & Assistance Specialists are available to help sort through the community resources available to you. ADRC may have the service you are looking for. If not, a specialist can provide assistance in contacting other local agencies to get you connected.

## ADRC Benefit Specialist

Benefits counseling helps individuals with their private or government benefits. The Benefit Specialist team helps explain the various types of benefits, how to access the benefits, connect you to resources, assist you through the process, and advocate when necessary.

ADRC specialists are available by phone (920) 448-4300, by appointment at ADRC, or in your home. There is no fee for services. Regular business hours are Monday - Friday, 8 a.m. - 4:30 p.m. Call to make an appointment outside of the regular hours.

You can also visit ADRC online at [www.adrcofbrowncounty.org](http://www.adrcofbrowncounty.org).



# Community Resources Introduction

The following pages are a listing of community resources that can provide temporary assistance to help meet your needs. They are grouped into categories and listed alphabetically.

For more information about any of these resources, call ADRC at (920) 448-4300, Monday through Friday, 8 a.m. - 4:30 p.m. You can also find more information by visiting ADRC's website at [www.adrcofbrowncounty.org](http://www.adrcofbrowncounty.org) or 2-1-1 at [www.get211.org](http://www.get211.org).

## Childcare

### Brown County Human Services- Bay Lake Consortium

**111 N. Jefferson St. Green Bay, WI 54301**  
**(888) 794-5747**

Provides assistance with funding for childcare in the form of reimbursement or vouchers. Parents must use authorized childcare providers and make co-payments. Must meet income eligibility guidelines and fill out an application.

### Family & Childcare Resources of N.E.W.

**201 W. Walnut St. #100 Green Bay, WI 54301**  
**(920) 432-8899**

Offers early childhood education for parents and their children from birth to age 5, playgroups, English Language Learner (ELL) programs, child care referrals, and home visits of outreach, education, and support.

### Encompass Childcare

**(920) 469-1236**

**Website: [www.ecompasseec.org](http://www.ecompasseec.org)**

Offers reduced-rates based on a sliding fee scale at all six of their locations. Call for more information.

### YMCA

**(920) 436-9622**

Offers before and after school care and summer programs for school-age children. Multiple locations. Call for more information.

### YWCA

**(920) 432-5581**

**230 S. Madison St. Green Bay, WI 54301**

Provides early childhood programs including childcare, preschool, enrichment classes, and summer camps.

# One-on-One Mentoring

## Circles Green Bay

**(920) 593-3474 | Email: [circlesgb@gbcc.me](mailto:circlesgb@gbcc.me)**

**Website: [www.circlesgreenbay.org/overview](http://www.circlesgreenbay.org/overview)**

A program that empowers, equips, and encourages households to navigate their way out of poverty. Each week, local families working to overcome poverty (Circle Leaders) meet with community volunteers (Allies) over dinner. A meal and programming for individuals and their families is provided. All household members are encouraged to participate. Children are cared for by dedicated volunteers who equip them with learning experiences designed to break the cycle of poverty. Participation in this program is an 18 month, weekly commitment. A participant's success is dependent on their ability to leverage community resources, implement content presented, and willingness to engage with volunteers.

# Clothing & Household Items

## Community Clothing Closet

**Green Bay First Church**

**1460 Shawano Ave. Green Bay, WI 54303**

**(920) 497-2800**

**Email: [office@greenbayfirst.org](mailto:office@greenbayfirst.org)**

Clothing Closet is open every Sunday after morning service (11:00 a.m.) and is available to all. Call or email for more information.

## Community Giving Closet

**Hope Community Church**

**1021 Hillcrest Heights Green Bay, WI 54313**

**(920) 471-3858**

Open the 1st and 3rd Wednesday of the month from 2 - 6 p.m.

## Family & Childcare Resources of N.E.W.

**201 W. Walnut St. #100 Green Bay, WI 54303**

**(920) 432-8899**

Help for adults who care for children, including parents and grandparents. Focus is on the first five years. Diapers and wipes are offered monthly. Diaper Drives are sporadic during the year with specific dates and times, visit their Facebook page for current dates.

Bring picture ID and child's birth certificate to register.

# Clothing & Household Items Continued

## Love Life

Assists low-income families in meeting basic infant needs under age 3. Diapers and other baby items as available. Thursdays (expect 5th Thur. of the month) from 1 - 4 p.m. Must bring a photo ID, proof of address, proof of birth for children, and WIC card if available. Each location is based on residency, attend the east side site if living in East Green Bay and the west side site if living in West Green Bay.

### West Side Site

The Hope Center  
505 Clinton St  
Green Bay, WI 54303  
(920) 497-1087

### East Side Site

Central Church  
831 Schoen Street  
Green Bay, WI 54302  
(920) 468-5414 or (920) 336-5636

## Thrift Stores

All of the thrift stores listed below provide need-based vouchers that can be used at their stores. Call stores for information about eligibility.

- **Ablelight** - 336 N. Military Ave. Green Bay, WI 54303 | (920) 544-5849
- **De Pere Christian Outreach** - 506 Butler St. De Pere, WI 54115 | (920) 339-1060  
*\*Serves De Pere residents only*
- **Goodwill** -2814 S. Oneida St. Green Bay, WI 54304 | (920) 498-0990,  
1301 Brosig St. Green Bay, WI 54311 | (920) 465-9601  
1660 W. Mason St. Green Bay, WI 54303 | (920) 569-1596
- **Manna for Life** - 1599 University Ave. Green Bay, WI 54301 | (920) 437-3629
- **St. Vincent de Paul** - 920 Wiese St. | 2121 Van Deuren St. | 940 Hansen Rd. Green Bay  
(920) 435-4040

## YWCA Women's Career Closet

**230 S. Madison St. Green Bay, WI 54301**

**(920) 432-5581**

Provides free, work-related clothing for low-income women.

Hours: Tuesday, 1 - 4 p.m. | Wednesday, 2 - 5 p.m. | Thursday, 3 - 6 p.m.

# Personal Services

## Laundry Love- Green Bay

[laundrylovegreenbay.org/events](http://laundrylovegreenbay.org/events)

For low-income, homeless, unemployed, or elderly in need of assistance with laundry. Provides soap and quarters. Limit 2 loads per individual, 5 loads per family. Load limits based on funds and supplies available. One date per month at a local laundromat on a first-come, first-serve basis. Visit them online for dates, times, and locations. Also occasionally offers *Pop-Up Barber Shop*. See website for specific dates/times.

## Laundry Love- Brown County

[laundrylovebrowncounty.com](http://laundrylovebrowncounty.com)

Holds events EVERY Tuesday at Express Laundry Center, 1742 E. Mason St., Green Bay. Anyone needing assistance may come to the event and Laundry Love Brown County pays the cost, provides laundry detergent and dryer sheets. Please visit our website or Facebook page for exact times and laundry limits.



# Employment

A brief listing of employment resources are listed here. For more in-depth information, please see ADRC's "Employment Guide: Resources for Older Adults and Adults with Disabilities."

## Brown County Job Center

**515 Pine St, Green Bay, WI 54301**

**(920) 930-6570**

**Website: [www.jobcenterofwisconsin.com](http://www.jobcenterofwisconsin.com)**

Provides career counseling, job seeking workshops, computer lab, and resume writing assistance. Services are provided free of charge.

## Department of Workforce Development (DWD)

**Website: [www.dwd.wisconsin.gov](http://www.dwd.wisconsin.gov)**

This state agency is responsible for job services, training, employment assistance for people seeking work, and helping employers find workers for current job openings in Wisconsin. There are no fees for this service.

## Division of Vocational Rehabilitation (DVR)

**301 N. Adams St. Green Bay, WI 54301**

**(920) 930-6733**

**Website: [www.dwd.wisconsin.gov/dvr](http://www.dwd.wisconsin.gov/dvr)**

Located in the Job Center. DVR is a state and federally funded agency that provides information about employment services for people with disabilities. You do not need to be on SSI or SSDI to qualify for DVR services. An assessment and most DVR services are provided free of charge.

Hours: Monday - Friday, 8 a.m. - 4:30 p.m.



# Financial Assistance- General

## ACCESS- See if you qualify

Find out what government funded financial assistance programs you may qualify for by checking out ACCESS, an internet tool provided by the Wisconsin Department of Health Services. It asks a few basic questions about the people in your home, our finances, and your bills. Your answers are private and secure. ACCESS will outline what programs you may be eligible for and how to apply. Their website is accessible in English or Spanish. Go to [www.access.wisconsin.gov](http://www.access.wisconsin.gov) and click on “Am I Eligible?” If you do not have internet access, you can use computers free of charge at ADRC, Brown County Public Libraries, Micah Center, and Brown County Job Center.

## Bay Lake Consortium

**111 N. Jefferson St. Green Bay, WI 54301 (2nd floor of the Sophie Beaumont building)  
(888) 794-5747**

Provides assistance in obtaining benefits for eligible recipients residing in Brown County within the guidelines of federal and state regulations. Services include economic support programs designed to assist people in meeting basic living and health care needs. Programs may have income and asset limits which vary with family size. There are also non-financial elements which need to be verified at the time of application. Hours: Monday through Wednesday, 8:00 a.m. to 4:15 p.m., Thursday from 9:00 a.m. to 4:15 p.m., and Friday from 8:00 a.m. to 11:00 a.m..

Services offered include:

- Caretaker Supplement (SSI Parents Only)
- FoodShare
- Child Care Assistance
- Health Care (BadgerCare Plus & Medicaid)

For Medicaid, Child Care, CTS, and FoodShare, apply by phone, mail, in person, or online at [www.access.wisconsin.gov](http://www.access.wisconsin.gov). **Reporting Changes by Mail:** Central Document Processing Unit (CDPU), PO Box 5234, Janesville, WI 54347. Reporting Changes by Fax: (855) 293-1822

## Forward Services Corporation

**726 Pine St. Green Bay, WI 54301 | (920) 940-6066**

Provides training, education, career guidance, and supportive services for individuals and families with children. Emergency assistance for rent/mortgage and utilities. Through the Wisconsin Works (W2) and FoodShare and Employment Training (FSET) Programs.

# Financial Assistance- General Continued

## Newcap

**(800) 242-7334**

**Website: [www.newcap.org/newcap\\_programs](http://www.newcap.org/newcap_programs)**

Community Action Agency with a mission of moving people from poverty to opportunities and economic security and improving communities. The Financial Capabilities Programs assist participants with a wide array of financial counseling and coaching services to develop a comprehensive budget to understand their entire financial picture.

This includes the cost to live month to month, to identify all income sources and debt obligations, and to develop a strategy to eliminate debts and achieve their goals.

## Oneida Center for Self Sufficiency

**2640 West Point Rd. Green Bay Wi, 54313**

**Call for information-(920) 490-3710**

Provides financial assistance to Oneida Nation tribal members and their spouses.

## St. Vincent De Paul Resource Center

**920 Weise St. #B Green Bay | (920) 435-4040 Ext 102**

**Email: [pvc@svdpgb.org](mailto:pvc@svdpgb.org) | Website: [www.svdpgb.org/resource-center](http://www.svdpgb.org/resource-center)**

St. Vincent de Paul is a group of volunteer members (Vincentians) whose desire is to offer help and hope to those in need. In some cases, they may not be able to provide what is requested, but they will do what they can with what they have to offer. Vincentians may offer information about other resources as well. When you reach out for help, you will be welcomed and connected with a SVdP-GB volunteer member. The Vincentian will set up a time to visit you in your home. If you do not have a home, they will meet with you at the SVdP-GB building. There are volunteers on site who will issue clothing cards if no other assistance is required. Call or email to schedule an appointment.

## Salvation Army

**626 Union Ct. Green Bay**

**(920) 497-7053**

**Website: [www.centralusa.salvationarmy.org/greenbay](http://www.centralusa.salvationarmy.org/greenbay)**

Provides one-time or short-term emergency assistance for basic needs, including energy assistance. Must meet with a case manager to determine eligibility. Call for more information.

# Financial Assistance- Home Energy

## Energy Assistance

**Partners for Community Development, Inc.**

**1407 S 13th Street, Sheboygan, WI 53081**

**Phone: (833) 646-0823 Fax: (920) 459-2782**

**Website: <https://partners4cd.com/energy-assistance/>**

The Wisconsin Home Energy Assistance Program (WHEAP) assists eligible households with their heating and electric bills. WHEAP provides assistance for heating costs, electric costs, and energy crisis situations. **WHEAP assistance is a one-time payment during the heating season (October 1-May 15).** The funding pays a portion of energy costs, and the payment is not intended to cover the entire annual energy costs of a residence. The amount of energy assistance payment varies depending on a variety of factors, including the household's size, income, and energy costs.

## Oneida Center for Self Sufficiency - Energy Assistance

**2640 West Point Rd. Green Bay, WI 54304**

**(920) 490-3710**

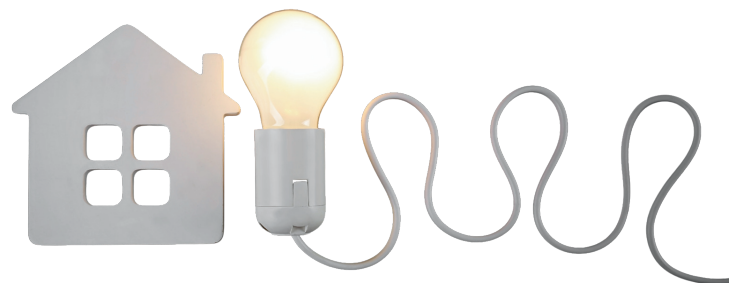
Offers financial assistance for payment of heating bills. Also repairs or replaces irreparable heating systems and provides weatherization assistance. Must meet state guidelines for low-income and an application must be filled out. Services available for Oneida Nation tribal members and their spouses. Call for information.

## Wisconsin Public Services

**(800) 450-7260**

**Website: [www.accel.wisconsinpublicservice.com/home/arrangements](http://www.accel.wisconsinpublicservice.com/home/arrangements)**

Offers to help with payment arrangements. Call for information.



# Financial Assistance- Telephone

## Discount Cellular Phone

Lifeline Program provides a discount on phone service (landline or cell) for qualifying low-income customers with participating providers. Most telephone and cell companies provides this program to their residential customers. You can receive Lifeline discounts on only one telephone number per household, either wireless or landline, but not both.

To qualify for Lifeline service, you must be eligible for the Homestead Tax Credit or be a recipient of one of these programs: Wisconsin Works, Medical Assistance, BadgerCare, Supplemental Security Income, Food Stamps, Low-Income Home Energy Assistance (LIHEAP), Federal Public Housing Assistance, TANF, or have an income below 135% the federal poverty level.

Call your current cell/phone carrier and say that you want to apply for Lifeline benefits.

Go online for a list of providers in your area:

[www.data.usac.org/publicreports/companiesnearestme/download/report](http://www.data.usac.org/publicreports/companiesnearestme/download/report)

Please note ADRC, Brown County Libraries, and Micah Center have public computers if you don't have access to one. Call ADRC (920) 448-4300 to have a hard copy mailed to you.

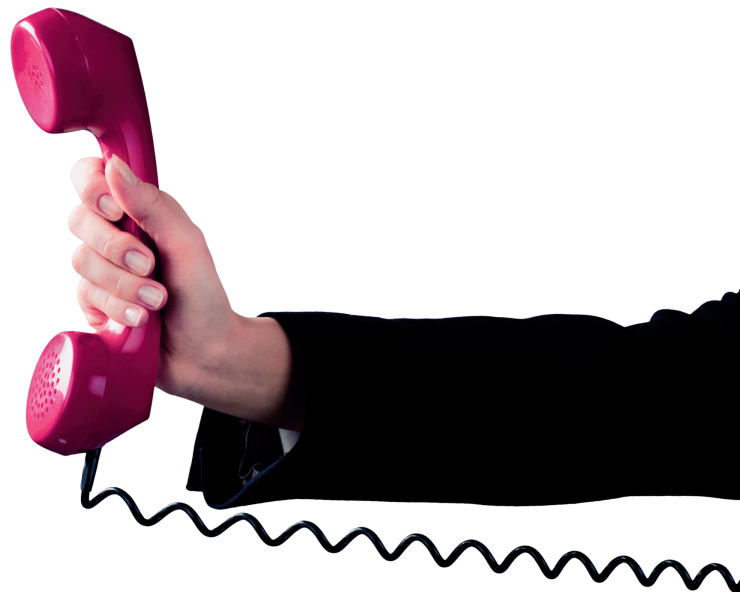
## Golden House

**1125 University Ave. Green Bay, WI 54302**

**Call for information- (877) 431-4321**

**24-hour Hotline: (920) 432-4244**

Provides a free cell phone to call 9-1-1 for victims of domestic violence.



# Legal Assistance and Advocacy

## Lawyer Referral & Information Service

**(800) 362-9082**

**Website: [www.wisbar.org/forpublic/inedalawyer/pages/iris](http://www.wisbar.org/forpublic/inedalawyer/pages/iris)**

Services include a hotline which answers legal questions free of charge, a lawyer referral service, and a community referral service for referrals to other legal service organizations, government agencies, or community resources to help with a specific legal concern. There may be a consultation fee from the lawyer you select.

## Legal Action of Wisconsin, Inc.

**201 W. Walnut St. #203; Green Bay, WI 54303**

**(920) 432-4645**

**Website: [www.legalaction.org/contact-us/green-bay-area-office](http://www.legalaction.org/contact-us/green-bay-area-office)**

Provides free legal counseling to low-income people in civil matters. Practice areas and special projects include: Benefits and Health programs, Family Law, Housing Law, Licenses, Criminal Records & Employment, SeniorLAW, Migrant Farmworkers, Social Security and the DOES Project.

## Wisconsin Disability Advocacy Team

**9118 W. Lisbon Ave #1; Milwaukee, WI 53222**

**414-578-0376**

**Website: [disabilityrightswi.org/program/protection-and-advocacy/](http://disabilityrightswi.org/program/protection-and-advocacy/)**

An advocacy team that is a group of people with disabilities and supporters advocating for issues in Wisconsin and the United States. It is run by people with disabilities and supporters.



# General Services- Drop-In Center

## Micah Center Services

**612 Stuart St. Green Bay, WI 54301 | (920) 617-8700**

**Website: [www.stjohnhomelessshelter.org/micahcenter/](http://www.stjohnhomelessshelter.org/micahcenter/)**

Day service resource center for men. Must be 18 or older, able to provide self-care, and willing to complete intake information. Daytime resource center for those experiencing homelessness or are at-risk. Services include case management, workshops, computer and education labs, internships, medical exam room, and mental health/AODA counseling.

## Wellspring

**413 Dousman St. Green Bay, WI 54303 | (920) 433-9995**

**Website: [www.stjohnhomelessshelter.org/wellspring/](http://www.stjohnhomelessshelter.org/wellspring/)**

Daytime resource center for women. Must be 18 or older. Services include basic needs, computer lab, job readiness, mentoring and peer support, resources and referrals, sobriety support group, and workshops.

# Food Resources

## Brown County UW Extension Community Garden

**1150 Bellevue St. Green Bay, WI 54302**

**(920) 391-4610**

Community gardens are available throughout the Green Bay area.

A fee is required to rent a plot. Gardens are usually available from late May until the middle of October, weather-dependent.

## Farmer's Market EBT

**(920) 448-4300**

Provides incentives for people on FoodShare or those using WIC dollars at various farmer's markets in downtown Green Bay and Oneida. Visit the booth at each market or call for more information.

## Farmer's Market Vouchers

**(920) 448-4300**

Provides vouchers for adults age 60 and older in Brown County to purchase food at farmer's markets. Vouchers are available seasonally at ADRC and off-site pick up locations. Income guidelines apply. Call for more information.

# Food Resources Continued

## FoodShare

**111 N. Jefferson St. Green Bay, WI 54301**

**To apply contact, Bay Lake Consortium at: (888) 794-5747.**

Program participants receive a Quest card that is used to purchase food. Must meet income guidelines.

## Food Pantries

There are a large number of food pantries in Brown County, many run by churches. **Obtain a current listing on ADRC's website, [www.adrcofbrowncounty.org](http://www.adrcofbrowncounty.org). To find "Brown County Food Resources," click on "Resource Library" and then "Food Resources."**

For additional assistance, call ADRC at (920) 448-4300. You can also search food pantries on [www.get211.org](http://www.get211.org), be sure to specify the county or city.

## Paul's Pantry

**1513 Leo Frigo Way Green Bay, WI 54302 | (920) 433-0343**

**Website: [www.paulspantry.org](http://www.paulspantry.org)**

Interviews conducted to establish eligibility.

Hours: Mon, Tues, Wed, Fri, 9 a.m. - 1 p.m. | Interviews 9 a.m. - 12 p.m.

Saturday Hours: 9 a.m. - 12 p.m. | Interviews 9 - 11 a.m.

## Salvation Army

This food pantry provides food assistance to low-income families. Must be at or below 185% of the federal poverty guideline. Hours: Monthly by appointment

626 Union Ct. Green Bay, WI 54303

Call for more information or to set up an appointment- (920) 593-2379

## WIC (Women, Infants, and Children)

Federally funded program that provides food vouchers for pregnant and nursing women, and for children under the age of 5. Must meet income guidelines and fill out an application. Spanish and Hmong translators may be available.

Call for information- East: (920) 437-8368 | West: (920) 431-0243

# Hot Meals

Looking for a hot meal? There are several community agencies and local churches that offer free meals. No eligibility requirements apply unless specifically noted by each location.

## Brown County Community Meals

Agency:	Contact Info:	Hours:	Other Information:
Aging and Disability Resource Center (ADRC)	300 S Adams St, Green Bay 920-448-4300 <a href="http://adrcofbrowncounty.org/">adrcofbrowncounty.org/</a> <a href="#">community-cafe-dining-sites</a>	Grounded Café: Mon- Fri 7 am - 2 pm	<ul style="list-style-type: none"> <li>Age 60+ - \$5 suggested donation</li> <li>Anyone under 60 can join for menu price</li> <li>Available for dine-in or pickup</li> </ul>
First United Presbyterian Church	605 N Webster Ave, De Pere 920-336-1446	<b>Dinner</b> 1st Wed of month 5:45pm	<ul style="list-style-type: none"> <li>Drive thru pick-up</li> <li>Monetary donations are welcomed but not required</li> </ul>
First United Church of Christ	1707 S. Oneida St. Green Bay, WI 54304 (920) 437-4164	Breakfast 1st & 3 <sup>rd</sup> Saturday 7:45 - 9:45 am	
NEW Community Shelter	301 Mather St, Green Bay 920-437-3766, ext 111 <a href="http://newcommunityshelter.org/">newcommunityshelter.org/</a> <a href="#">Programs/Community-Meals</a>	<b>Lunch</b> 11:30am - 12:30pm <b>Dinner</b> 5pm - 6pm	<ul style="list-style-type: none"> <li>Must be peaceful and sober</li> <li>If not peaceful or sober, will be offered a bag lunch and asked to try again tomorrow</li> </ul>
The Salvation Army	626 Union Ct, Green Bay 920-593-2379 <a href="http://centralusa.salvationarmy.org/greenbay/cure-hunger">centralusa.salvationarmy.org/greenbay/cure-hunger</a>	<b>Lunch</b> Mon - Fri 11:15am - 12:15pm	<ul style="list-style-type: none"> <li>Lunch guests should arrive no earlier than 11:10am</li> <li>To-go meal options available</li> </ul>
West Side Moravian Church	1707 S Oneida St, GB 920-499-4433 <a href="http://wsmoraviangb.org">wsmoraviangb.org</a>	<b>Breakfast</b> 4th Sat 8am - 10am	

# Medical/Health Services, Prescription Assistance, Dental Services

## Bay Lake Consortium- BadgerCare Plus

111 N. Jefferson St. Green Bay, WI 54301

(888) 794-5747

Website: [www.access.wisconsin.gov](http://www.access.wisconsin.gov)

A Medicaid program available for some low-income individuals who met program requirements. Must meet income guidelines. Fill out an application to determine eligibility.

## Bay Lake Consortium- Medicaid for Elderly, Blind, & Disabled

111 N. Jefferson St. Green Bay, WI 54301

(888) 794-5747

Medicaid programs for adults who are elderly, blind, or disabled and who meet program requirements.

## Vivent Health

445 S. Adams St. Green Bay, WI 54301

(920) 437-7400

Formally known as the AIDS Resource Center of WI - AODA Services. Services include medical, case management, and HIV specialty dental care for people with HIV/AIDS. Health care is provided regardless of ability to pay.

## The Marketplace

(800) 318-2596

Website: [www.healthcare.gov](http://www.healthcare.gov)

Offers health care coverage to most U.S. citizens. May be eligible for tax credits to reduce costs.

## Newcap Community Health Services

1540 Capitol Dr. Green Bay, WI 54303

(920) 430-1350 | (800) 242-7334

Provides health care, reproductive family planning, pregnancy testing, referrals and follow-ups, and PAP tests. Services are free or at very low cost. Services provided to both men and women.

# Medical/Health Services, Prescription Assistance, Dental Services Continued

## Planned Parenthood

**2605 S. Oneida St. Green Bay, WI 54304**

**(920) 432-0031**

Provides comprehensive reproductive health and family planning service based on a sliding fee scale.

Accepts BadgerCare+, Medicaid, and some insurance.

Services provided to both men and women.

## Oneida Community Health Center

**525 Airport Rd. Hobart, WI 54155**

**Call for hours - (920) 869-2711 or (866) 869-2711**

Comprehensive health care including outpatient medical care, dental care, optical care, and pharmacy service for Oneida tribal members. Fees based on financial need.

## Partnership for Prescription Assistance

**(888) 477-2669**

**Website: [www.pparx.org](http://www.pparx.org)**

Helps qualifying patients without prescription drug coverage get the medications they need through the right program for them. Can receive free or nearly free medications.

Apply by phone or online to see if you qualify.

## Donated Dental Services Program

**Call for information and hours- (866) 812-9840**

Provides low or no-cost dental care donated by area dentists. To receive services, you must be disabled, elderly, or chronically ill, a resident of Wisconsin, and lack adequate income to pay for needed care. Application required and there is a waiting list.

# Health Care

## NEW Community Clinic

For more information, visit [www.newcommunityclinic.org](http://www.newcommunityclinic.org).

Provides access to quality and comprehensive healthcare to the underserved in our community.

## Health Support Services

**622 Bodart St. Green Bay, WI 54301 | (920) 437-9773**

**(NWTC) 2740 W. Mason St. Green Bay, WI 54303 | (920) 498-5436**

If you are low-income and do not have insurance, there are two outpatient clinics available that offer a variety of non-emergency services.

Most services are free, but some charge on a sliding scale.

## Wisconsin Well Women Program

**622 Bodart St. Green Bay, WI 54301**

**(920) 437-9773**

Provides preventative health screening services to women with little or no health insurance coverage.

Well Woman pays for mammograms, pap tests, and osteoporosis.

## Healthcare for the Homeless

**879 Mather St. Green Bay, WI 54303**

**(920) 437-7206**

If you are homeless, there is one outpatient clinic available to provide non-emergency care and case management for free to those who are eligible.

Visits to community shelters happen weekly.



# Dental Care

**Are you uninsured, have Medicaid/Medicaid HMO or both Medicare and Medicaid and need your teeth cleaned?**

**NWTC Dental Hygiene Student Clinic**

2740 W. Mason St. Green Bay | (920) 498-5450

*Appointments available Sept-Dec and Feb-May only. Appointment required. Small fee is charged.*

**Are you uninsured, don't have Medicare, and need dental care or oral surgery?\***

**NWTC**

2740 W. Mason St. Green Bay | (920) 498-5436

*Dental examinations, restorations, extractions, and limited root canal treatments are available.*

*\*If you have Medicare (and do not have Medicaid) or have refused a Medicare plan, you are not considered uninsured. Call ADRC at (920) 448-4300 to speak with a specialist about your situation.*

**Do you have Medicaid/BadgerCare or have both Medicaid & Medicare and need dental care or oral surgery?**

**N.E.W. Dental Clinic**

424 S. Monroe Ave. | (920) 544-0346

2740 W. Mason St. | (920) 272-9300

**Familia Dental**

East side - 1931 Main St. | (920) 499-2770

West side - 2280 W. Mason St. | (920) 321-3501

*(Acceptance of Medicaid/Medicare depends on which provider is available and specific insurance type.)*

Dental examinations, x-rays, fillings, extractions, limited endodontic treatment, and emergency treatment are available. Co-pays may apply and are due at time of service.

If you have Medicare (and do not have Medicaid) or have refused a Medicare plan, you are not considered uninsured. Call ADRC (920) 448-4300 to speak with a specialist about your situation. Some dental services may be available on a limited basis for those that are uninsured. Co-pays may apply and are due at time of service.

# Mental Health - Outpatient Counseling, Psychiatric Care & Resources

A wide variety of mental health services are available in Brown County. For a complete listing of providers accepting Medicaid (MA) or offering a sliding scale fee, as well as other helpful resources, visit ADRC online at [www.adrcofbrowncounty.org](http://www.adrcofbrowncounty.org).

Click on “Resource Library” and then “Mental Health.”

For additional assistance, call ADRC at (920) 448-4300.

## Brown County Human Services

**3150 Gershwin Drive Green Bay, WI 54311**

**(920) 391-6940**

**Website: [www.browncountywi.gov](http://www.browncountywi.gov)**

Brown County offers many different counseling services including: alcohol and drug treatment, case management, and mental health assessment. Does not offer mental health counseling.

Most services are available to Brown County residents on a generous sliding fee scale. In order to receive Medicare and MA psychiatric services, you must first have tried to utilize other psychiatric services in the community.

## Family Services Counseling Clinic

**(920) 436-6800**

**300 Crooks St. Green Bay, WI 54301**

**Website: [www.familyservicesnew.org/counseling-clinic](http://www.familyservicesnew.org/counseling-clinic)**

Offers short-term, free counseling services through the Crisis Center. Also offers counseling programs through a Family Service counselor. Accepts MA on case-by-case basis. Sliding scale fee and accepts some HMOs.

## MyConnectionNEW.org

Online resource database specifically designed to help you find information, resources, and services for mental health and substance abuse issues.

# Mental Health - Inpatient Psychiatric Care

## Bellin Psychiatric Center

**301 E. St. Joseph St. Green Bay, WI 54301**

**(920) 433-3630**

An 80-bed psychiatric hospital that provides inpatient and outpatient services for children, adolescents, and adults. Provides appropriate level of care to individuals suffering from mental and emotional problems.

## Brown County Community Treatment Center

**3150 Gershwin Dr. Green Bay, WI 54311**

**(920) 391-4700**

A county run, inpatient psychiatric hospital.

## Willow Creek Behavioral Health

**1351 Ontario Rd. Green Bay, WI 54311**

**(920) 328-1220**

Psychiatric hospital that provides inpatient and outpatient services for children age 5 and older, adolescents, and adults. Provides appropriate level of care to individuals suffering from mental and emotional problems.

# Shelter- Emergency & Temporary

## All Seasons Transformation (AST), formerly Transformation House

**(920) 857-9611 | 430 S Clay St, Green Bay**

Men only shelter provided at a reduced and affordable rate. A 49-bed transitional living facility for men who are experiencing a transition in their lives. This secure and sober facility serves men of all ages through advocacy, safety, and support.

## Freedom House

**(920)432-4646 | 2997 St. Anthony Dr, Green Bay**

Christian-based homeless shelter that provides housing for families with children. Intake is completed primarily by telephone. There are no fees. Residents must have a clean criminal record and be drug and alcohol free.

# Shelter- Emergency & Temporary Continued

## Golden House

**(920)432-4244 | Temporary Physical Address: 600 S Webster Ave, Green Bay**

Provides 24-hour emergency shelter for women who are victims of domestic abuse and their children. There are no fees or eligibility requirements.

## House of Hope

**(920)884-6740 | 1660 Christiana St, Green Bay**

- **Emergency Shelter:** Housing first shelter and support for families with children, with a specialty in providing services for young parents ages 17-24 and their children of any age.
- **Housing Stability Program:** Housing search and placement, case management, and financial assistance for families with children.
- **Hope Center:** Shelter and supportive programming for unaccompanied youth ages 0-17.
- **Sustaining Hope:** Support offered to people served by House of Hope programming who return for case management, supportive connections, referrals, and resources to ensure they can remain stably housed.

## New Community Shelter

**(920)437-3766 | 301 Mather St, Green Bay**

Provides emergency shelter for adult men and women experiencing homelessness. Screening required to determine admission. Transitional living program helps transition from homelessness to self-sufficiency. Zero tolerance for drugs and alcohol. Must have a background clear of violent/assault charges. There are no fees.

## Safe Park Parking

**(920)883-7202 | Email: [SafePlaces@wisewomengp.org](mailto:SafePlaces@wisewomengp.org)**

Wise Women Gathering Place offers a Safe Place Parking program that provides a place to park overnight for people living in their vehicles. **Parking guests can access the location during the program's hours, 6 p.m. through 8 a.m.** Parking guests will have access to the various programs offered by Wise Women Gathering Place that support their mission of growing peace, respect, and belonging through skill-building, sharing of resources, and caring support for the community. The lot is monitored by security staff and volunteers throughout the night.

# Shelter- Emergency & Temporary Continued

## Newcap Inc.

(800) 242-7334

Provides assistance and services to move people from poverty to opportunities/economic security.

- **Permanent Supportive Housing (PSH) Program:** Provides a permanent housing options to chronically homeless families in Brown County.
- **Youth Rapid Re-Housing Program:** Provides up to 24 months of rental assistance and training and development by case management with independent living skills for each participant.
- **Homeless Prevention Program:** Targets individuals/families that have an eviction of 14 days or less. The case manager will work with the landlord to mediate the situation, if possible and/or assist the applicant in finding another unit.
- **Tenant Based Rental Assistance (TBRA) Program:** Program providing rental assistance to individuals/families experiencing homelessness or those at imminent risk of becoming homeless **living in Brown but excluding the city of Green Bay.** Priority is given to the disabled, those who have a disabled family member, low-income who are disabled or have a disabled family member, and those who are chronically homeless or at risk of becoming chronically homeless. Preference is then given to applicants who have been diagnosed with a mental illness.

## Safe Shelter

(920)932-3383 | Email: [pwebster@safesheltergb.org](mailto:pwebster@safesheltergb.org)

To provide emergency shelter to families while providing resources which supports the dignity and self-worth of all residents in their journey of transitioning to self-sufficiency. Please contact program to determine eligibility and schedule an appointment with a case manager advocate.

## Salvation Army- Motel Vouchers

(920)497-7053 | 626 Union Ct, Green Bay

Provides vouchers for short-term motel stays when other shelters are unavailable. Must meet with a case manager to determine eligibility.

# St. John's Ministries

## St. John's Shelter- Men Only

**(920)436-9344**

**411 St John St, Green Bay**

St. John's Men's Shelter assists men who would otherwise have no place to be and possibly be on the street. Along with a bed and a warm meal, St. John's will connect each guest to resources and support to reach their goals. **Summer drop-in services** for all adults (men & women) include showers, limited laundry, donation request, breakfast/lunch and case management.

**Shelter Fall/Winter Hrs** (Men only, Nov. 1 - Apr. 30):

Every day, 5pm - 9am

**Summer Drop-in Services** (All, May 1 - Oct. 31):

Tuesday from 8:30am - 1:30pm &

Friday from 8:30am - 12pm (no lunch on Fridays)

## Summer Safe Sleep

**From May 1 to October 31**

St. John's Ministries identifies certain individuals who are the most vulnerable for their summer safe sleep option from May 1 to October 31 at the beginning of the summer. If an individual not on the predetermined list, they will be referred to a case manager at the Micah Center or Wellspring who will determine eligibility. If a case manager deems the individual's circumstance necessary for shelter, it will be on a temporary period. **Call (920)436-9344 for assistance.**

## Engage at St. John's Park

**418 St John St, Green Bay**

Seasonal programming from May 1 to October 31. Programming can run from 8:00am - 8:00pm, see calendar posted at St. John's Park for schedule. This is a collaborative effort with multiple agencies able to meet with homeless individuals 18+ to provide resources, programming, and activities. For more information, contact Will Peters at [Will.Peters@greenbaywi.gov](mailto:Will.Peters@greenbaywi.gov).

# St. John's Ministries Continued

## The Micah Center- Men Only

**(920)617-8700**

**612 Stuart St (Main Office), Green Bay**

The Micah Center is a year-round daytime resource center for adult men who are at risk of or experiencing homelessness. Provides comprehensive services, including case management, employment programs, counseling, medical care, and much more. For more information on the Joseph Project see page #.

**Fall/Winter Hours** (Nov. 1 - Apr. 30):

Monday - Friday, 9:00am - 4:00pm

**Summer Hours** (May 1 - Oct. 31):

Mon, Wed, & Thurs from 8:30am - 3:30pm

Closed on Tuesday & Friday

## Wellspring Resource Center & Shelter - Women Only

**(920)857-9587**

**700 E Walnut St, Green Bay**

Wellspring is a daytime resource center for women at risk of or experiencing homelessness. Offers case management, trauma-informed programming, and access to resources that empower women to achieve their goals. St. John's Women's Shelter assists women who would otherwise have no place to be and possibly be on the street. Along with a bed and a warm meal, St. John's will connect each guest to resources and support to reach their goals.

**Resource Center Fall/Winter Hrs** (Nov. 1 - Apr. 30): Mon - Fri, 9am - 4pm

**Shelter Fall/Winter Hours** (Nov. 1 - Apr. 30):

Every day, 5pm - 9am

**Resource Center Summer Hours** (May 1 - Oct. 31): Mon, Wed, & Thurs from 8:30am - 3:30pm.

Closed on Tuesday & Friday.

# Rent Assistance & Subsidized Housing

## ADRC Website

ADRC's website features a list of subsidized and un-subsidized housing options for elderly adults and adults with disabilities. To view the regularly updated listings, visit [www.adrcofbrowncounty.org](http://www.adrcofbrowncounty.org) and click on "Resource Library" and then "Housing" where you'll find lists of service providers, including independent apartments and federally subsidized apartments.

## Forward Service Corporation

**726 Pine St. Green Bay, WI 54301 | (920) 940-6066**

Program assists homeless families and/or individuals with supportive services including financial assistance and rental assistance. To be eligible, you must meet some of the following criteria: homeless, in an emergency shelter, in transitional housing, being evicted within a week from a private dwelling unit with no place to go, family or single person over 18, U.S. citizen, low monthly income, and pass a criminal background check. For the first year, you pay a percentage of your income for rent. People with a poor credit history will be accepted if they meet the above criteria. Families and/or individuals need to make a commitment to the program for one year. Administers the W2 program, a form of financial assistance.

## Integrated Community Solutions (ICS)

**2605 S. Oneida St. Green Bay, WI 54304 | (920) 498-3737**

Provides financial assistance with housing needs such as monthly rent reduction, subsidized rental units, and down payment and closing cost assistance. Vouchers are available for those who are unable to work due to a disability to help with housing and maintenance costs. Administers the Housing Choice Voucher Program. There may be a waiting list. An application needs to be completed to determine eligibility for the programs. Criminal background and credit checks are required.

## Brown County Housing Authority- Subsidized Housing

**100 N. Jefferson St. Rm 608 Green Bay, WI 54301 | (920) 448-3400**

The Brown County Housing Authority administers the Housing Choice Voucher Program through a contract with the Integrated Community Solutions. Provides a listing of housing and subsidized housing for income eligible families, elderly, and persons with disabilities. Must meet income eligibility. Brochures and applications are available from ICS or ADRC.

# Transportation

There are several agencies and programs that provide reduced-rate or free transportation in Brown County. For more information, see ADRC's website [www.adrcofbrowncounty.org](http://www.adrcofbrowncounty.org) and the "Transportation Options in Brown County" resource.

## Curative Connection

Transportation services for Brown County residents who are elderly and/or have a disability. Reservations are required 24 hours in advance. Trip priorities are: medical transportation, work related, or transportation to meal sites. Social rides are also available on a first-come, first-serve basis. If you are under age 60, a doctor's verification of disability is required. An application is also required. **Call for more information or to schedule a ride (920) 227-4273.**

## Green Bay Metro Transit System

**901 University Ave. Green Bay, WI 54301**

**(920) 448-3450 (Green Bay Metro) | (920) 448-4300 (ADRC)**

Provides reduced bus fares for passengers carrying a Medicare card or a reduced fare ID card obtained from Green Bay Metro. Application and a physician's verification are required. Ticket required before boarding the bus and can be purchased at various outlets in Green Bay.

## Green Bay Metro Paratransit

Green Bay Metro provides transportation for adults with disabilities. Rides are given to those who have been qualified as unable to use fixed route bus service for some or all trips.

**An application is required and can be obtained at the ADRC 920-448-4300 or Green Bay Metro 920-448-3450 or you can complete it on-line at this link: [Green Bay Metro ADA-Paratransit Eligibility Forms](#).**

Trip must be within 3/4 of a mile of a fixed Green Bay route and operate within the Green Bay Metro service area. The non-agency fare is \$4.00/one-way trip. One personal care attendant can ride at no additional cost. You must provide your own equipment. Once you are approved, trips can be scheduled by calling 920-448-3185. Hours for rides: same as Green Bay Metro above, except no Sunday service. Office hours are: 8:00 a.m.—5:00 p.m.

# Transportation Continued

## Non-Emergency Medicaid Transportation

If you are a Medicaid recipient, have a scheduled appointment to a Medicaid provider, and have no other means of transportation to your appointment, then transportation services need to be arranged through **Veyo at 1-866-907-1493 or through the member portal at member.veyo.com** at least 48 hours in advance. When calling, you will need the date and time of your appointment, name, telephone number, and address of the health care provider, and your Forward Health member identification number. However, if you live in a nursing home and receive Medicaid, the nursing home needs to call a van company directly to arrange transportation. Call the ADRC of Brown County at 920-448-4300 with questions.

## Forward Services- WeTAP & JAL Programs

**For more information call (920) 940-6066 or email: info@fsc-corp.org**

Loan programs for individuals for car purchase and repair.

Must meet income eligibility to qualify. Each program is different.

**WETAP:** (920) 940-6045

Website: [www.fsc-corp.org/programs/wetapvanpool](http://www.fsc-corp.org/programs/wetapvanpool)

Email: [mtawawilli@fsc-corp.org](mailto:mtawawilli@fsc-corp.org)

**JAL program:** 726 Pine St. Green Bay, WI 54301 or 2201 Oregon St. Oshkosh, WI 54901

(920) 292-1336

Must be a participant in the FSC programs.



# Transportation Continued

## My Garage: A Community Project

**Call for more information: (800) 242-7334**

**My Garage:** A Community Project is a Newcap stability and self-sufficiency program that provides simple repairs and maintenance on cars owned by elderly, disabled, or low-income residents of Florence, Marinette, and Oconto counties. You can also qualify for this program in Brown and Shawano counties if you are a working, low-income resident. Services include tire rotations, fuel pump replacements, and simple fixes. As the program grows, so will the services offered. The repairs will be done in Wausaukee, Green Bay, or Marinette.

**Eligibility Guidelines:** Client must be elderly (60 or older), have a disability, or low-income and working. For those low-income and working, income must be at or below 185% of the Federal Poverty Guidelines. For those who are elderly or have a disability, income must be at or below 200% of the Federal Poverty Guidelines. The client must have the vehicle registered in their name, have proof of auto insurance, and have a valid drivers license.

**Application Process:** Complete an application and intake form. To complete an application, please contact the program contact. Along with completed application, send documentation of auto insurance, drivers license, proof of household income, and auto registration. If approved, the program contact will contact you about your vehicle and repairs needing to be made. Learn more and find the application here: [www.newcap.org/program\\_category/stability](http://www.newcap.org/program_category/stability)

*This publication is produced courtesy of ADRC of Brown County, endorsements are not assumed or implied. Reproduction is permitted as long as credit to the agency is retained and distribution is for noncommercial purposes only. ADRC of Brown County is an equal opportunity provider functioning under an affirmative action plan.*